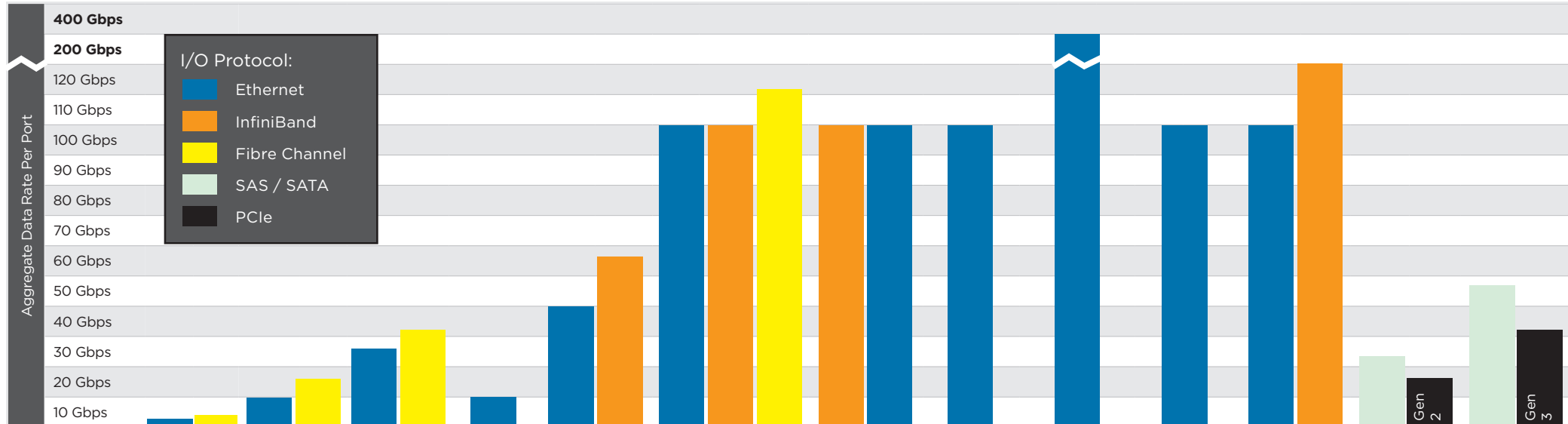
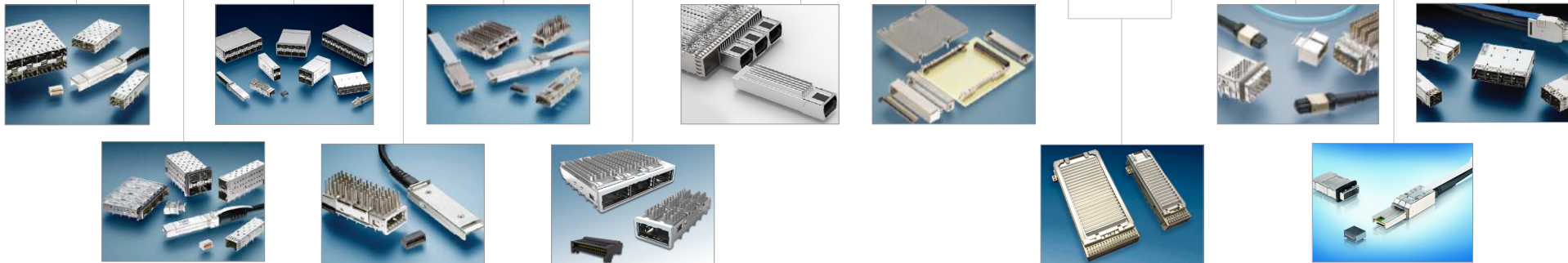


Pluggable I/O Protocol Guide

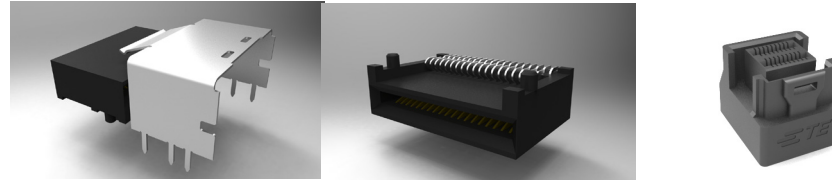


Product	SFP		SFP+		zSFP+		XFP	QSFP+		zQSFP+		microQSFP	CFP			CFP2			CFP4		CXP		Mini-SAS	Mini SAS HD			
Channels	1		1		1		1	4		4		4	10			10	4	8	4		10		12	4	4		
Lane Rate (Gbps)	1	4	10	16	25	32	10	10	14	25	25/28	25	10			10	25	25	10	25	10	10	6	4	12	8	
Port Width (mm)	14		14		14		18.55	18.55		18.55		14	78.8			42.8			21.99		26		17.75		10.75		
Ports Max 19" RU	72		72		72		16*	36		36		72	4			8			16		13*		16*		28*		
1RU Throughput	288G		1.2T		2.3T		160G	2.0T		4.0T		7.2T	400G			1.6T			1.6T		1.6T		384G		1.3T		
SMT Connector	1367073-2		1888247-1		2170088-1		1367500-1	2110819-1		1551920-2		2291538-1	2057630-1			2274845-1			2288229-1		2149448-1		1761987-1		-		
1x1 Cage	1489669-1		2007198-1		2198709-1		1489951-1	1888674-1		2170754-1		2297551-1	2057629-1			2274843-1			2288227-1		2149159-5		1888321-1		2149027-1		
Ganged/1xN Cage	1761014-1		2007132-1		2227730-1		2170125-1	2057183-1		2170747-1		2297550-1	2132404-1			2287076-1			2289496-1		2149731-1		1888321-2		2149966-1		
Stacked/2xN Cage	1658391-2		2007492-5		21938318-2		-	2085945-2		2227666-1		2296273-1	-			-			-		-		-		-		
Copper Cables	1948134-4		2127934-1		2821224-1		-	2053638-1		2231368-1		-	-			-			-		-		-		1-2127833-9		2202503-1



SAS Standard Products

3G, 6G, 12G, 24G



Mini-SAS internal (4X)

Internal Mini SAS (SFF-8087)

Internal Mini SAS HD (SFF-8643)

SFF-8087	SFF-8643
1-1888019-2	2227580-1
1761987-2	2227581-1
1888174-2	2227582-1
	2227595-1
	2227640-1
	2227642-1

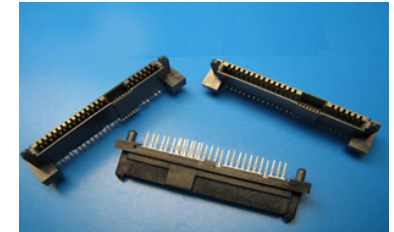
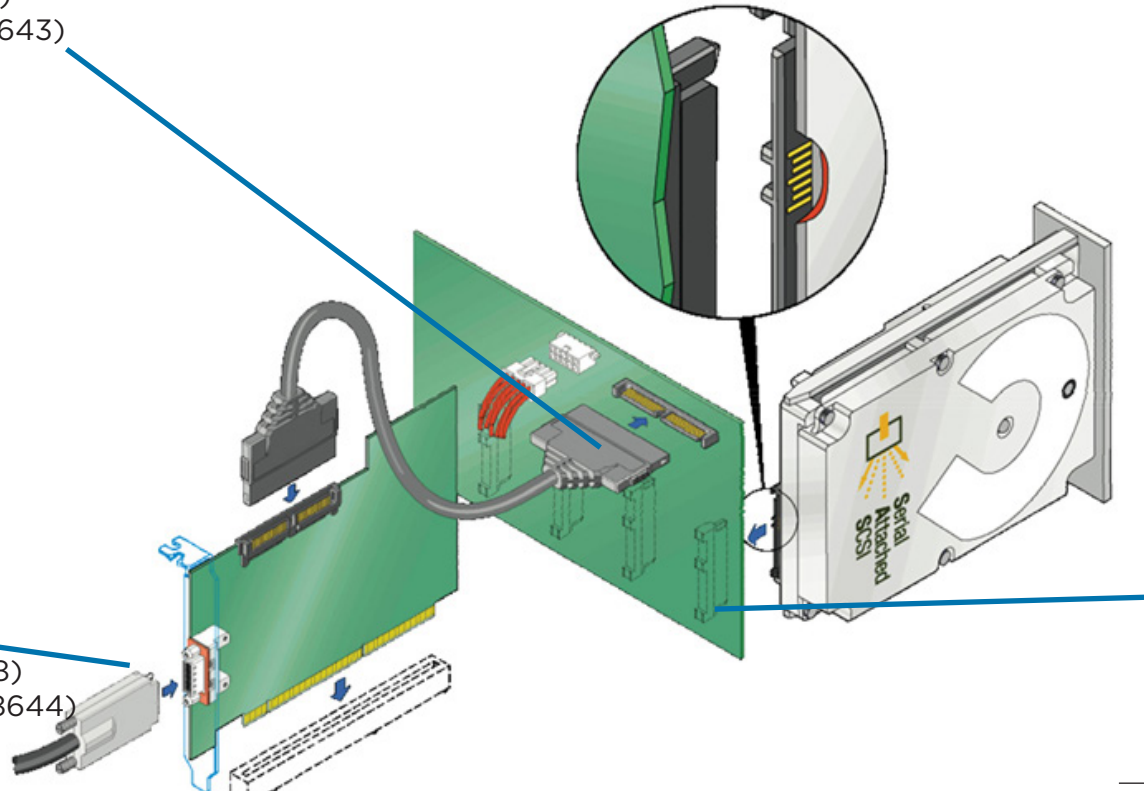


Mini-SAS external (4X)

External Mini SAS (SFF-8088)

External Mini SAS HD (SFF-8644)

SFF-8088	SFF-8644
1761987-7	2149027-1
2007570-1	2149966-1
1888321-1	2149375-1
1888321-2	2198484-1
	2198483-1
	2180736-1



**SAS HDD
(Hard Disk Drive)**
3G/6G/12G/24G

SFF-8482, 3G/6G 2X

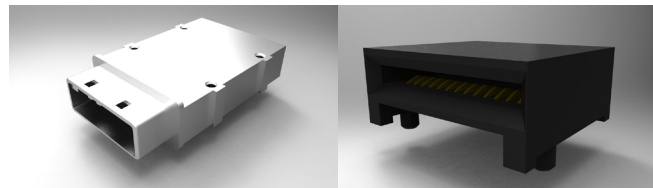
SFF-8680, 12G 2X

SFF-8639, 12G Multilink SAS

+ PCIe Gen3

SFF-8631, 24G 4/8X

SFF-8482	SFF-8680	SFF-8639
1735368-1	2170506-1	2170560-1
1735690-1	1735880-1	2170518-1
1735869-1	2170563-1	1735961-1
1735870-1		
1735871-1		



1-1773723-8 DND PDF 7/2016

© 2016 TE Connectivity Ltd. family of companies. All Rights Reserved

TE Connectivity and the TE connectivity (logo) are trademarks.

Other logos, product and company names mentioned herein may be trademarks of their respective owners.

